

Beacon lights - Ø 70mm

DC voltage - Light and beep

Faz/engineering®
Innovative and industrial signage and applications

by **Fazim**/Group



Reference :

FZ70 - Voltage + CA + Color

Example : FZ7024CCBc

+ Specify options (flashing, beep, ...)

Generalities

The small Beacons, Lights Ø 70mm, are sealed equipment (IP65), for signaling security. Fixed light, flashing or customisable version, with or without sound beep, they are found most often in the industry, machinery, electrical cabinet, loading dock, mobile barrier and the rail domain ...

Description

- Base : In white polycarbonate, fixed by 2 screws tapping, the product is RoHS.
 - Dôme : Transparent polycarbonate or orange, fixing the base: ¼ turn. Excellent UV resisting.
 - Gaskets : O-ring between the dome and the base and an seal 3mm thick in the base, making the product an IP65.
 - Lighting : 9 LED in 9Vdc version, 24 LED for other versions in high brightness, angle $\phi = 20^\circ$.
Color: Red (R), Green (G), Amber (A), White (Bc) and blue (Be), on request : pink (Ro), Violet (Vi), two-colored and multi-colored RGB LED.
- Optional on request, High light LED with 3 LED power angle $\phi = 120^\circ$, with 500 Lumens in white !

Technical specifications

- Supply voltage and average consumption in rotating light (+/-20%) :

Tensions	9Vcc	12Vcc	24Vcc	48Vcc	72Vcc	100 à 300 Vcc	180 à 500Vcc
Couleurs							
R, J, O	-	2 W	3.8 W	1.7 W	-	2,5 W à 220Vcc	-
V, Be, Bc	0.7 W	2 W	3.8 W	2.3 W	-	2,5 W à 220Vcc	-

- Conformities : Norms EN55015, EN61547, EN61000-6-2, EN61000-6-4, ROHS, Reach, CE.
- Lifetime (MTBF*) : 100 000 hours.
- Operating temperature : -30°C à +70°C. (22°F to 158°F)
- IP protection standard : IP65

(* : mean time between failure)

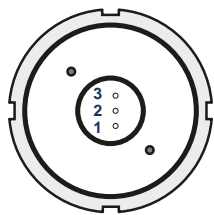
Advantages

- Insensitivity to vibrations, mechanical shocks.
- Resistance to moisture and water splashes.
- Electrical shocks resist : 5KV during 50µs.
- Immunity against magnetic fields.
- Assembly and disassembly easy, fast and secure .
- Exceptionally long life and unparalleled.
- Low power consumption and heat dissipation.



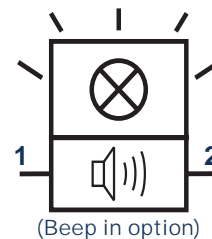
Connections

- Terminal under the beacon



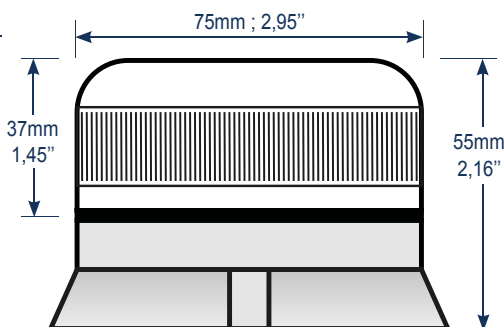
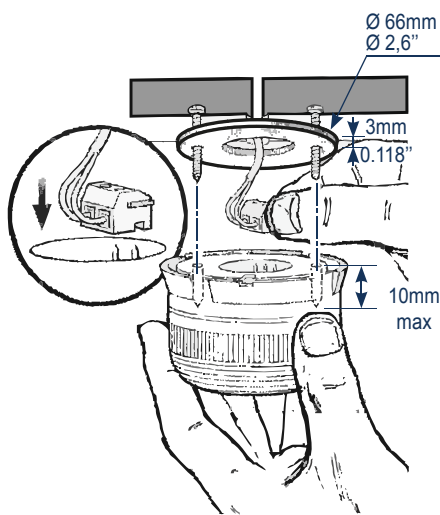
1 : « + or - » of the supply
 2 : « - ou + » of the supply
 3 : Not connected
 No polarity.
 Terminal or output wiring (50cm) (19.7").

Electrical symbol



Mechanical specifications

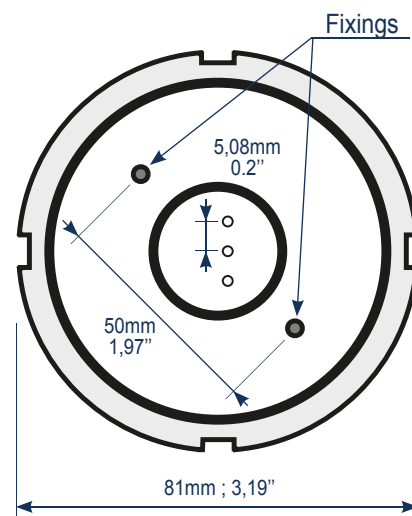
- Fixing : 2 tapping screws (no supplied), spacing 50mm (1,97").



Fixing cap quarter turn.

O-ring seal between base and cabochon for IP65.

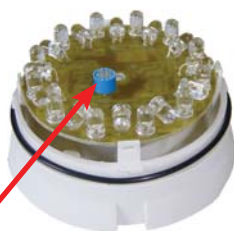
3mm elastomer gasket, the base and your wall carrier to IP65



Working

Settings :

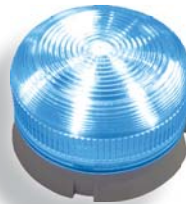
Frequency setting
 blinking 0,5 to 4 Hz



When supply on, the beacon will illuminate in fixed light.

With flashing option, the flashing frequency will be adjustable flashing, take off the cap and turning the potentiometer. the frequency is adjustable from 0.5 to 4 Hz or customizable depending on the options requested.

With Beep option, a sound with a frequency 1KHz will be flashing at the same speed than previously set.



Options & warranty

- Options : On request, other voltages, anti harmonic filters for the power supply. Specific support plastic base. Customization program tailored. External pilot (RS232 or other). Power LED, LED colors, two-color version, three-color version, beep sound, 85 db siren with choice of sound ...
- Warranty : 24 months manufacturer. No terminal or other metallic thing must be welded or lose the guarantee.
- Recommendation : Cable section, more or equal to 0.6mm² up to 48Vdc, and more or equal to 1mm² beyond 48Vdc. Cable ends must be finished with any crimp terminal.