

# Lamp

Three phase + 2 functions

FTMD - Three phase - Ø 30mm

**Faz**/engineering   
Innovative and industrial signage and applications

by **Fazim**/Group 



Reference :

*FTTMD + VOLTAGE\* + VOLTAGE\*\* + COLORS + 30*

\* : (between phases) + CA    \*\* : (direct voltage)+CC

Example : FTTMD400CA24CCBcBcBcRV30

## Generalities

**FTTMD** LED lamps are fixed ignition for the «presence phase voltage» function, with an additional viewing a state machine operation. This device will replace five conventional lamps. The proven robustness of these lights, you can install them in humid and disturbed environments.

## Description

- Body : Co-polyamide , fixing plastic nut, diameter 30 mm (1.181"), IK10, IP67 in front face, through the flat gasket provided, RoHS compliant, CE, UL 94 V-0.
- Front face : 5 color LED : red (R), green (V), amber (A), white (Bc), orange (O) or blue (Be) high brightness + 1 transparent cap.

## Technical specifications

- Supply voltages 50/60hz, AC/DC (+/-20%) and average consumptions :

Colors \ Voltages	between phases						functions	functions	functions
	24Vac	48Vac	127Vac	230Vac	400Vac	690Vac	12Vdc	24Vdc	48Vdc
R, A, O	- Cos φ : 1 Resistive	425 mVA Cos φ : 0.1 Capacitive	1.1 VA Cos φ : 0.1 Capacitive	2.25 VA Cos φ : 0.1 Capacitive	4.8 VA Cos φ : 0.1 Capacitive	- Cos φ : 0.1 Capacitive	125mW	220mW	-
V, Be, Bc	- Cos φ : 1 Resistive	- Cos φ : 0.1 Capacitive	- Cos φ : 0.1 Capacitive	2.3 VA Cos φ : 0.1 Capacitive	4.8 VA Cos φ : 0.1 Capacitive	- Cos φ : 0.1 Capacitive	120mW	220mW	-

- Conformities : Norms EN55015, EN61547, EN61000-6-2, EN61000-6-4, RoHS, Reach, CE.
- Lifetime (MTBF\*) : 100 000 hours.
- Operating temperature : -30°C à +70°C (22°F to 158°F).
- IP protection standard : IP67 (in front face).
- IK protection standard : IK10.

(\* : mean time between failure)

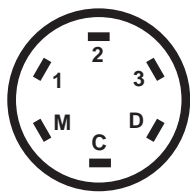
## Advantages

- Insensitivity to vibrations, mechanical shocks.
- Resistance to moisture and water splashes.
- Electrical shocks resist : 5KV during 50µs.
- Immunity against magnetic fields.
- Assembly and disassembly easy, fast and secure .
- Exceptionally long life and unparalleled.
- Low power consumption and heat dissipation.



## Connections

- 6 Quick-Fit male terminals 2.8mm (0.11")

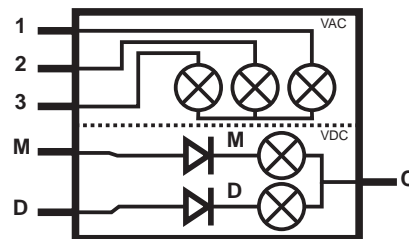


Three phase supply : **between 1, 2 & 3 terminals**  
Same working as FTT LED signal lamp ! (internal wiring star)

Direct voltage supply :

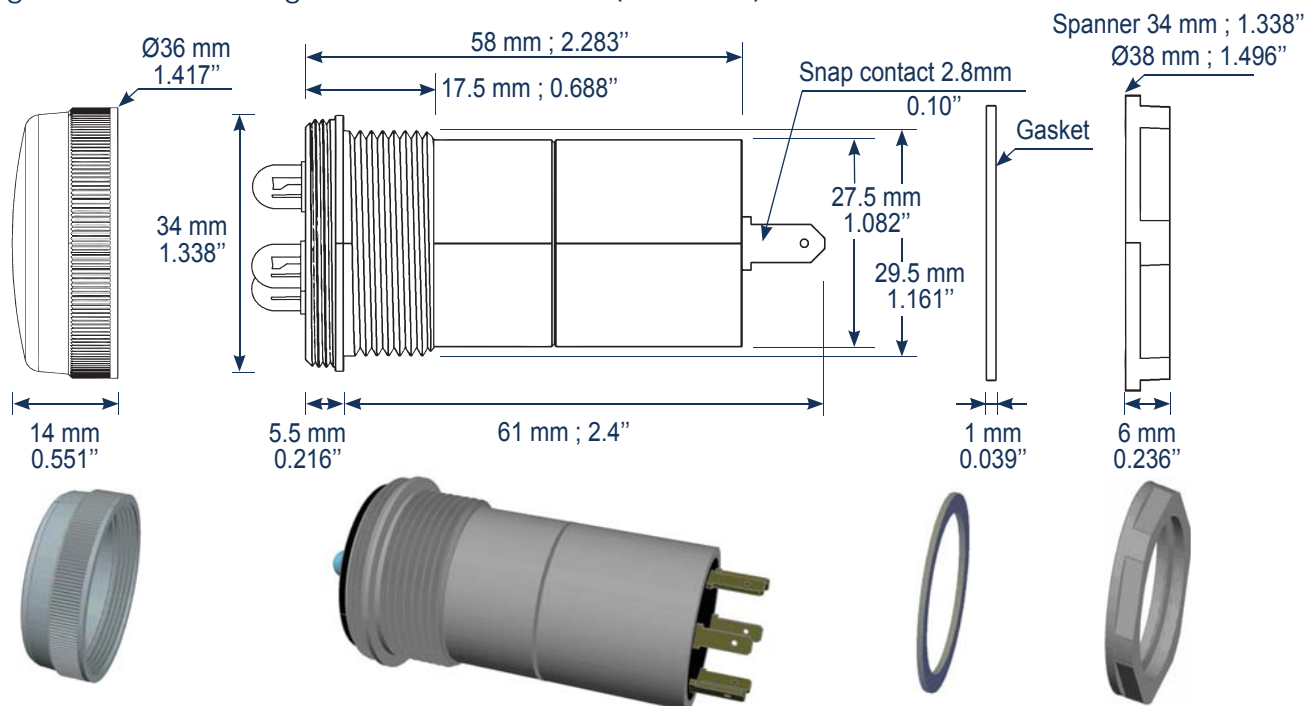
- C = Common, common cathode,
- M = Function 1 (Working),
- D = Function 2 (Default).

## Electrical symbol



## Mechanical specifications

- Fixing : standard drilling  $\varnothing$  30mm  $\pm$ 0.5mm ; ( $\varnothing$  1.181").



## Working

- Off :



- On :



L1



L2



L3



L1, L2 + L3



L1, L2 + L3  
+ function 1



Function 1



L1, L2 + L3  
+ function 2



L1, L2 + L3 +  
functions 1 & 2



## Options & warranty

- Options : Other voltage on request, color LED, color cap, output wiring terminals or connector of your choice ...
- Warranty : 24 months manufacturer. No Quick-Fit Terminal Male must be welded or lose the guarantee.
- Recommendation : The Quick-Fit Terminal Male must be completely covered with isolation that can be removed only by destruction.