

# Lamp Rotation control

## CR1SH - Direct voltage - Ø 30mm



Reference :

*CR1SH - VOLTAGE + CC + COLOR + 30*

Example : CR1SH24CCR30

### /Generalities

**CR1SH** LED Lamp (visual rotation control, in 1 direction, clockwise). When this device is turned on, 3 color LED, illuminate one by one, to simulate the rotation of a motor running. The proven robustness of these lights, you can install them in humid and disturbed environments.

### /Description

- Body : Co-polyamide , fixing plastic nut, diameter 30 mm (1.181"), IK10, IP67 in front face, through the flat gasket provided, RoHS compliant, CE, UL 94 V-0.
- Front face : 3 color LED : red (R), green (V), amber (A), white (Bc), orange (O) or blue (Be) high brightness + 1 transparent cap.

### /Technical specifications

- Supply voltages and average consumptions (+/-20%) :

Voltages \ Colors	12Vdc	24Vdc	48Vdc	110Vdc	127Vdc	220Vdc
R, A, O	-	-	-	-	-	-
V, B, Bc	-	252 mW	510 mW	-	-	-

- Conformities : Norms EN55015, EN61547, EN61000-6-2, EN61000-6-4, RoHS, Reach, CE.
- Lifetime (MTBF\*) : 100 000 hours.
- Operating temperature : -30°C à +70°C (22°F to 158°F).
- IP protection standard : IP67 (in front face).
- IK protection standard : IK10.

(\* : mean time between failure)

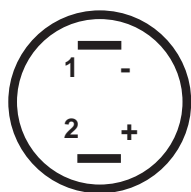
### /Advantages

- Insensitivity to vibrations, mechanical shocks.
- Resistance to moisture and water splashes.
- Electrical shocks resist : 5KV during 50µs.
- Immunity against magnetic fields.
- Assembly and disassembly easy, fast and secure .
- Exceptionally long life and unparalleled.
- Low power consumption and heat dissipation.



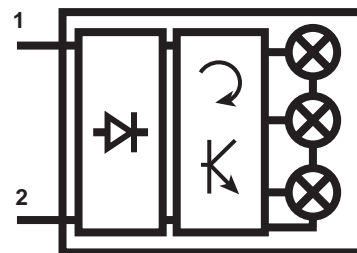
## Connections

- 2 Quick-Fit male terminals 2.3mm (0.248")



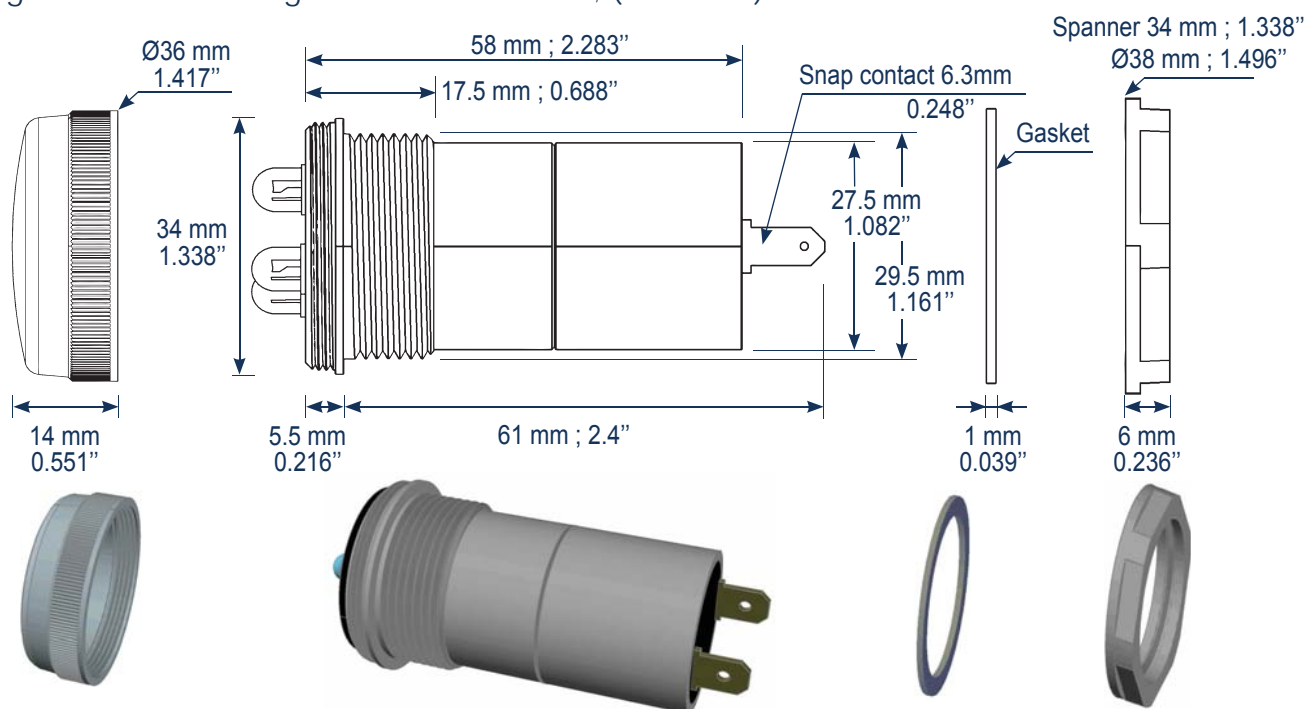
1 = «-»  
2 = «+»

## Electrical symbol



## Mechanical specifications

- Fixing : standard drilling Ø 30mm +/-0.5mm ; (Ø 1.181").



## Working

- Off :



- On :



Step 1



Step 2



Step 3

1 turn = about 1,33Hz.  
1 LED turned on = 250ms.

Step 1, 2, 3, then return to step 1, ...  
while the lamp is under supply voltage !



## Options & warranty

- Options : Other voltage on request, another speed, color LED, color cap, output wiring terminals, snap contact with screw or connector, customisable engraved text, are also anti-clockwise (CR1ST) and 2 directions of rotation (CR2S) ...
- Warranty : 24 months manufacturer. No Quick-Fit Terminal Male must be welded or lose the guarantee.
- Recommendation : The Quick-Fit Terminal Male must be completely covered with isolation that can be removed only by destruction.