

Flashing + relay Lamp

CLRDE - Direct voltage - Ø 30mm

Faz/engineering®
Innovative and industrial signage and applications

by **Fazim**/Group



Reference :

CLRDE - VOLTAGE + CC + COLOR + 30

Example : CLRDE24CCR30

Generalities

The "CLRDE" signal lamp, direct voltage, is a flashing LED light. Under voltage, the relay works for the transmission of a remote command, they have too a feedback signal and lamp test. The proven robustness of these lights, you can install them in humid and disturbed environments.

Description

- Body : Co-polyamide , fixing plastic nut, diameter 30 mm (1.181"), IK10, IP67 in front face, through the flat gasket provided, RoHS compliant, CE, UL 94 V-0.
- Front face : 3 color LED : red (R), green (V), yellow (J), amber (I), white (Bc), orange (O) or blue (Be) high brightness + 1 cap matches the colors of LED : Red, Green, Blue, Orange, Yellow or Transparent for White.

Technical specifications

- Supply voltages and average consumptions (+/-20%) :

Voltages Colors	12Vdc	24Vdc	48Vdc
R, J, I, O	Not yet indicated	500 mW max	Not yet indicated
V, B, Bc	Not yet indicated	Not yet indicated	Not yet indicated

- Conformities : Norms EN55015, EN61547, EN61000-6-2, EN61000-6-4, RoHS, Reach, CE.
- Lifetime (MTBF*) : 100 000 hours.
- Operating temperature : -30°C à +70°C (22°F to 158°F).
- IP protection standard : IP67 (in front face).
- IK protection standard : IK10.

(* : mean time between failure)

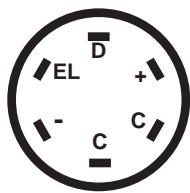
Advantages

- Insensitivity to vibrations, mechanical shocks.
- Resistance to moisture and water splashes.
- Electrical shocks resist : 5KV during 50µs.
- Immunity against magnetic fields.
- Assembly and disassembly easy, fast and secure .
- Exceptionally long life and unparalleled.
- Low power consumption and heat dissipation.

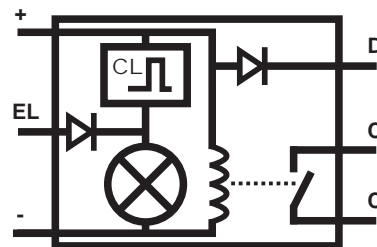


Connections

- 6 Quick-Fit male terminals 2.8mm (0.11")

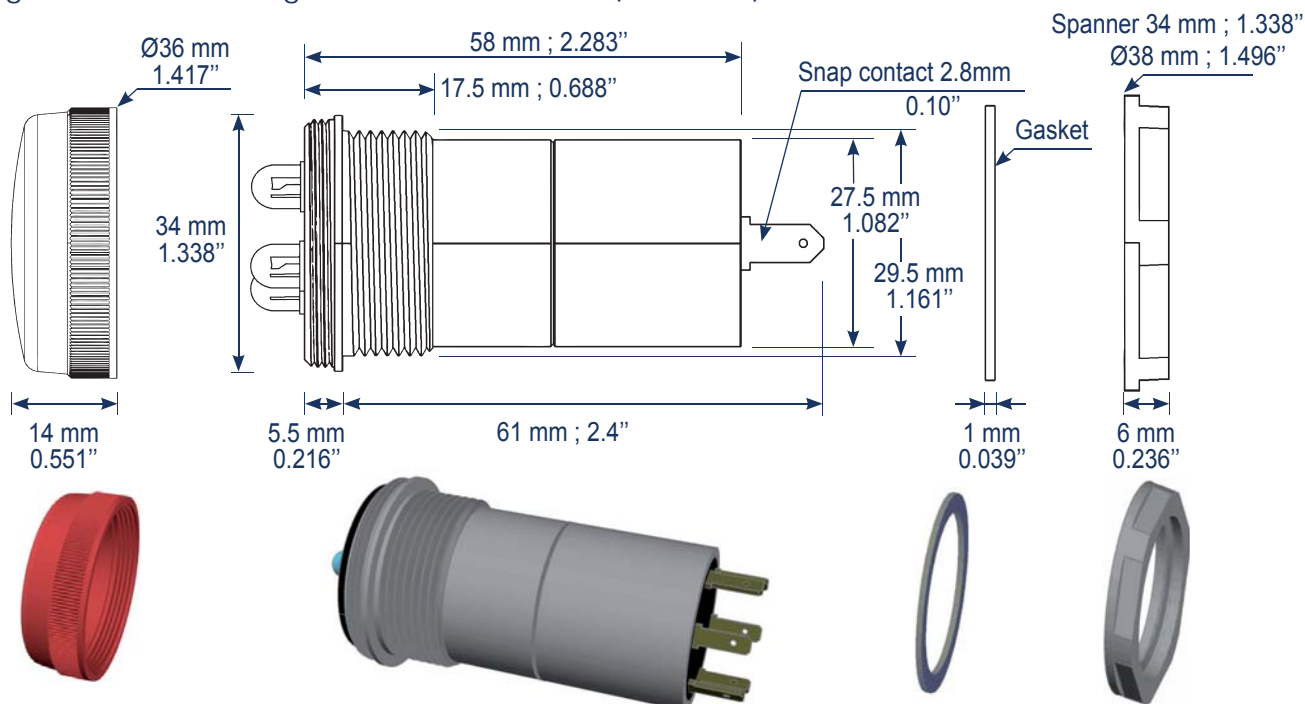


Supply : **between terminals «+» and «-» (common),**
 Open contact : **between terminals «C» and «C»,**
 Lamp test : **«EL» = supply voltage,**
 Feedback signal : **«D» is a return signal,**
If «D» = «+», The signal lamp is turned on !
 Max features contact : **1A / 220Vdc / 250Vac.**



Mechanical specifications

- Fixing : standard drilling \varnothing 30mm +/-0.5mm ; (\varnothing 1.181").



Working

- Off :



- On :



Lighting flash, about 1Hz.
 The lamp flashes and the relay turns on.
 Feedback on «D».



Options & warranty

- Options : Other voltage on request, color LED, color cap, output wiring terminals or snap contact with screw...
- Warranty : 24 months manufacturer. No Quick-Fit Terminal Male must be welded or lose the guarantee.
- Recommendation : The Quick-Fit Terminal Male must be completely covered with isolation that can be removed only by destruction.