

Signal Lamp with threshold

FS - Single-phase - Ø 22mm



Reference :

FS + VOLTAGE + CA + COLOR + 22
(standard thresholds see technical specifications table)

Example : FS230CABe22
+ options >35V, >70V, ou >110V

Generalities

The signal lamps **FS** in single-phase, are fixed lights, allowing the visualisation of « voltage presence ». The threshold voltage allows the LED lamp, lighting from the value set by this one. The robustness of these indicators can be installed in disturbed and humid environments.

Description

- Body : Co-polyamide , fixing plastic nut, diameter 22 mm (0.866"), IK10, IP67 in front face, through the flat gasket provided, RoHS compliant, CE, UL 94 V-0.
- Front face : 3 color LED : red (R), green (V), yellow (J), amber (I), white (Bc), orange (O) or blue (Be) high brightness + 1 cap matches the colors of LED : Red, Green, Blue, Orange, Yellow or Transparent for White.

Technical specifications

- Supply voltages 50/60Hz (+/-20%) and consumptions :

Voltages	24Vac	48Vac	115Vac	127Vac	230Vac	400Vac
Colors						
Standards threshold minimum warranty	12Vac	24Vac	35Vac	35Vac	35Vac	35Vac
R, J, I, O	160 mVA Cos φ : 1 Résistive	570 mVA Cos φ : 1 Résistive	1.55 VA Cos φ : 0.1 Capacitive	1.9 VA Cos φ : 0.1 Capacitive	6 VA Cos φ : 0.1 Capacitive	11.2 VA Cos φ : 0.1 Capacitive
V, B, Bc	185 mVA Cos φ : 1 Résistive	400 mVA Cos φ : 1 Résistive	2.3 VA Cos φ : 0.1 Capacitive	1.8 VA Cos φ : 0.1 Capacitive	4.6 VA Cos φ : 0.1 Capacitive	5 VA Cos φ : 0.1 Capacitive

- Conformities : Normes EN55015, EN61547, EN61000-6-2, EN61000-6-4, ROHS, Reach, CE.
- Lifetime (MTBF*) : 100 000 hours.
- Operating temperature : -30°C à +70°C (22°F to 158°F).
- IP protection standard : IP67 (in front face)
- IK protection standard : IK10

(* : mean time between failure)

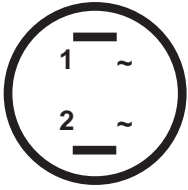
Advantages

- Insensitivity to vibrations, mechanical shocks.
- Resistance to moisture and water splashes.
- Electrical shocks resist : 5KV during 50µs.
- Immunity against magnetic fields.
- Assembly and disassembly easy, fast and secure .
- Exceptionally long life and unparalleled.
- Low power consumption and heat dissipation.



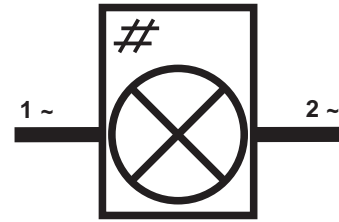
Connections

- 2 Quick-Fit male terminal 6.3mm (0.248")



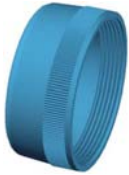
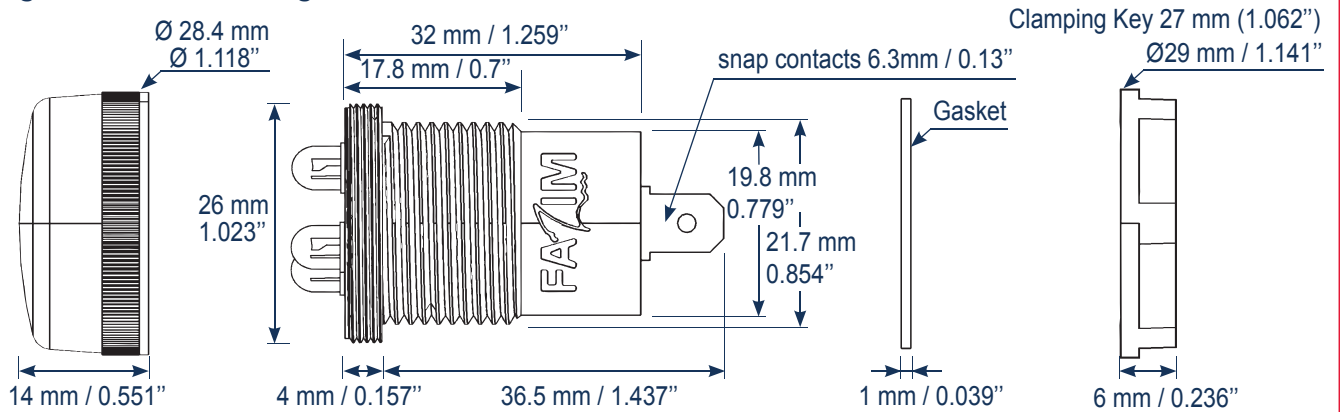
1 = phase 1
2 = Neutral or Phase 2

Electrical symbol



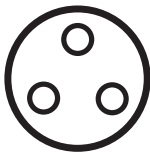
Mechanical specifications

- Fixing : standard drilling $\varnothing 22\text{mm} \pm 0.5\text{mm}$; ($\varnothing 0.866''$).



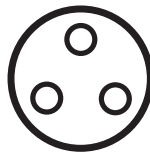
Working

- Off :

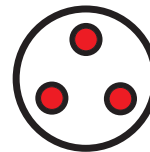


Supply voltage
= 0Vca

- On :



Supply voltage
 \leq threshold voltage



Supply voltage
> or >> threshold voltage



Options & Warranty

- Options : Other voltage on request, other supply frequencies, other voltages threshold : 35V, >70V or >110V, specific threshold value, color LED, colors cap, output wiring terminals or snap contact with screw...
- Warranty : 24 months manufacturer. No Quick-Fit Terminal Male must be welded or lose the guarantee.
- Recommendation : The Quick-Fit Terminal Male must be completely covered with isolation that can be removed only by destruction. be careful with your peak voltages for your choice of threshold voltage.