

Signal Lamp

F - Direct voltage - Ø 12mm

Faz/engineering®
Innovative and industrial signage and applications

by **Fazim**/Group



Reference :

VOLTAGE + CC + COLOR + 12

Example : 48CCO12

Generalities

We present here the Ø12mm direct voltage LED signal lamps ! It's LED fixed lighting for « voltage presence ». 6 SMD LEDs, Except 6 Vcc voltage with 3 LEDs. It is also available in bicolor and tricolor. The proven robustness of these lights, you can install them in humid and disturbed environments.

Description

- Body : Co-polyamide, galvanized steel nut, diameter 12mm (0.472"), protection factor : IP55 in front face, RoHS compliant, CE, UL 94 V-0.
- Front face : 6 SMD* color LED : red (R), green (V), orange (O), white (Bc), or blue (Be) high brightness + 1 cap matches the colors of LED : Red, Green, Blue, Orange, Jaune, Transparent for white, bicolor and tricolor. * SMD : Surface Mounted Device.

Technical specifications

- Supply voltages and consumptions (+/-20%) :

Voltages Colors	6Vcc	12Vcc	24Vcc	48Vcc	110Vcc	127Vcc
R, J, I, O	100 mW	240 mW	400 mW	480 mW	620 mW	860 mW
V, B, Bc	180 mW	180 mW	240 mW	380 mW	560 mW	700 mW

- Conformities : Norms EN55015, EN61547, EN61000-6-2, EN61000-6-4, RoHS, Reach, CE.
- Lifetime (MTBF*) : 100 000 hours.
- Operating temperature : -30°C à +70°C (22°F to 158°F).
- IP protection standard : IP55.

(* : mean time between failure)

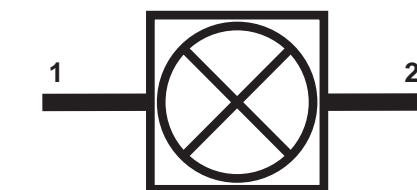
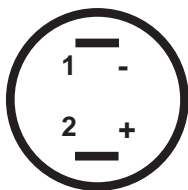
Advantages

- Insensitivity to vibrations, mechanical shocks.
- Resistance to moisture and water splashes.
- Electrical shocks resist : 5KV during 50µs.
- Immunity against magnetic fields.
- Assembly and disassembly easy, fast and secure .
- Exceptionally long life and unparalleled.
- Low power consumption and heat dissipation.



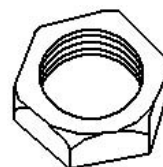
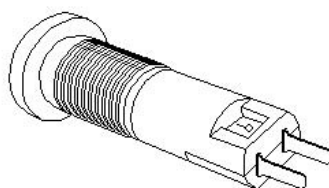
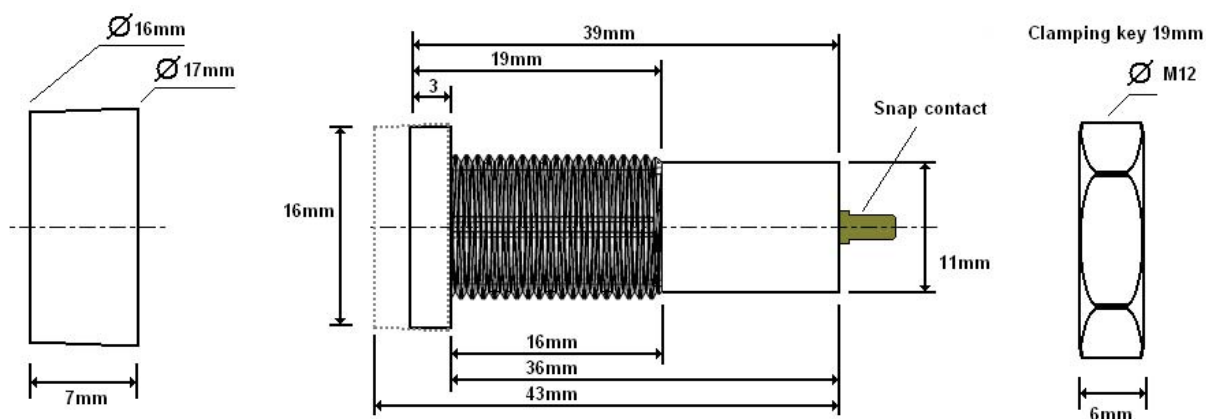
Connections

- 2 Quick-Fit male terminals 2.8mm (0.110")
- or output wiring terminals about 30cm



Caractéristiques mécaniques

- Fixing : standard drilling $\varnothing 12\text{mm}$ (0.472"), $\pm 0.5\text{mm}$



Working

- Off :



- On :



Options & warranty

- Options : Other voltage on request, color LED, color cap, output wiring terminals, bicolore and tricolore version, Two distinct sides in one .
- Warranty : 24 months manufacturer. Never remove the cap, never dismantle the product, no Quick-Fit terminal male must be welded or lose the guarantee.
- Recommendation : The Quick-Fit Terminal Male must be completely covered with isolation that can be removed only by destruction.